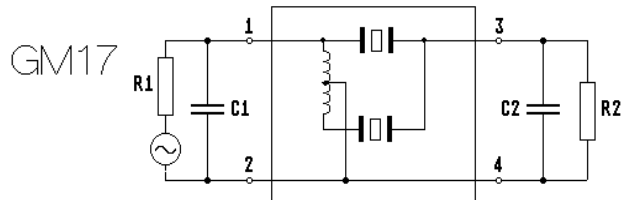
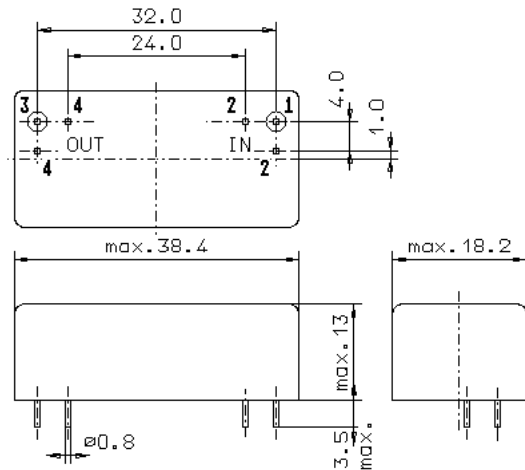


Specification for crystal filter:

QF 23.3-12500/06
1. General
1.1. Package:


- | | |
|-----------------------------------|------------------|
| 1.2. Type name: | QF 23.3-12500/06 |
| 1.3. Number of poles: | 6 |
| 1.4. Operating temperature range: | -20°C to +70°C |
| 1.5. Storage temperature range: | -45°C to +85°C |

2. Electric values

- | | |
|-----------------------------------------------------------------------------|-------------------------|
| 2.1. Nominal centre frequency fo: | 23.3 MHz |
| 2.2. Pass band | |
| 2.2.1. Bandwidth between 1 dB - frequencies: | $> f_0 \pm 62.5$ kHz |
| 2.2.2. Ripple at $f_0 \pm 62.5$ kHz: | < 1.0 dB peak to peak |
| 2.2.3. Insertion loss:
(measured on smallest attenuation in pass band) | < 4.5 dB |

2.3. Stop band

- | | |
|--------------------------------------------------|-------------------------------------|
| 2.3.1. $f_0 \pm 1.7$ MHz | > 60 dB |
| 2.3.2. Alternate attenuation: | > 60 dB |
| 2.4. Terminating impedance (input and output): | $50 \Omega // 0$ pF |
| 2.5. Maximum input power level: | +10 / +20 (working / non-damaged) |

3. Marking on the case: Manufacturer, date code
QF 23.3-12500/06

4. Environment conditions: Corresponding to Telefilter's CF001 standard

Edited by: _____ date: _____ name: _____