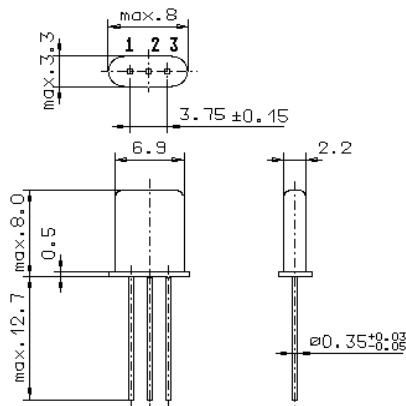


Specification for monolithic crystal filter

**MQF 81.4-0400/06**

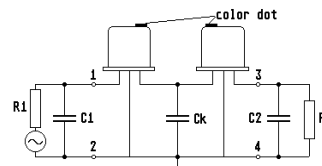
**1. General**

1.1. Case: 2 x GH 9



GH9

mm



PLW

- 1.2. Type name: MQF 81.4-0400/06
- 1.3. Number of poles: 4, 3 rd overtone
- 1.4. Operating temperature range: -20°C to +70°C
- 1.5. Storage temperature range: -45°C to +85°C

**2. Electric values**

2.1. Nominal centre frequency  $f_0$ : 81.4 MHz

**2.2. Pass band**

- 2.2.1. Bandwidth between 3 dB - frequencies:  $\geq f_0 \pm 2.0$  kHz
- 2.2.2. Ripple:  $\leq 1.0$  dB at  $f_0 \pm 1.0$  kHz
- 2.2.3. Insertion loss:  $\leq 6.0$  dB  
( measured on smallest attenuation in pass band )

**2.3. Stop band**

- 2.3.1.  $f_0 \pm 12$  kHz:  $\geq 30$  dB
- 2.3.2. Alternate attenuation:  $\geq 40$  dB ( except spurious )
- 2.3.3. Spurious responses:  $\geq 25$  dB

2.4. Terminating impedance ( input and output ): 1000  $\Omega$  // -0.3 pF

2.4.1. Coupling capacitance  $C_c$ : 2.0 pF

3. Marking on the case: DSL 81.4/F  
0400 date code

4. Environment conditions: Corresponding to Telefilter CF001

Edited by: \_\_\_\_\_ date: \_\_\_\_\_ name: \_\_\_\_\_