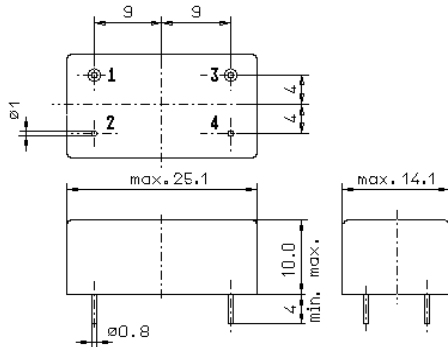


Specification for monolithic crystal filter: **MQF 45.5-7000/07**

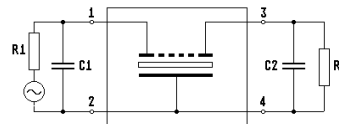
1. General

1.1. Case:

GM3



GM3



- | | |
|-----------------------------------|------------------|
| 1.2. Type name: | MQF 45.5-7000/07 |
| 1.3. Number of poles: | 4 |
| 1.4. Operating temperature range: | -30°C to 85°C |
| 1.5. Storage temperature range: | -35°C to 85°C |

2. Electric values

- | | |
|---|---|
| 2.1. Nominal centre frequency f_0 : | 45.5 MHz |
| 2.2. Pass band | |
| 2.2.1. Bandwidth between 3 dB - frequencies: | $\geq f_0 \pm 35$ kHz |
| 2.2.2. Ripple: | ≤ 1.0 dB at $f_0 \pm 27.5$ kHz |
| 2.2.3. Group delay distortion: | ≤ 2.0 μ s at $f_0 \pm 27.5$ kHz |
| 2.2.4. Insertion loss:
(measured on smallest attenuation in pass band) | ≤ 3.0 dB |
| 2.3. Stop band | |
| 2.3.1. $f_0 \pm 70$ kHz | ≥ 10 dB |
| 2.3.2. $f_0 \pm 100$ kHz | ≥ 25 dB |
| 2.3.3. $f_0 \pm 250$ kHz | ≥ 35 dB |
| 2.3.4. $f_0 \pm 450$ kHz | ≥ 40 dB |
| 2.3.5. Spurious responses: | ≥ 8 dB |
| 2.4. Terminating impedance (input and output): | 500 Ω // 2 pF |
| 3. Marking on the case: | manufacturer, date code
MQF 45.5-7000/07 |
| 4. Environment conditions: | Corresponding to Telefilter CF001 |

Edited by: _____ date: _____ name: _____