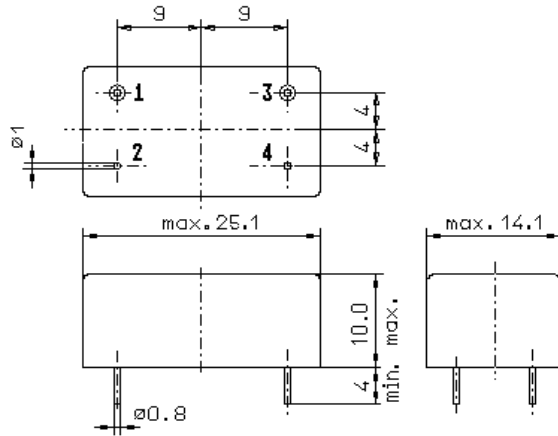


Specification for monolithic crystal filter:

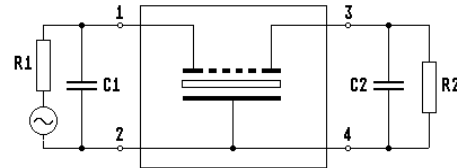
MQF 30.0-7000/03

1. General

1.1. Package:



pin1 Input
pin3 Output
pin2,4 GND



- | | |
|-----------------------------------|------------------|
| 1.2. Type name: | MQF 30.0-7000/03 |
| 1.3. Number of poles: | 6 |
| 1.4. Operating temperature range: | -40°C to +85°C |
| 1.5. Storage temperature range: | -55°C to +105°C |

2. Electric values

- | | |
|---|---|
| 2.1. Nominal centre frequency f_0 : | 30.0 MHz |
| 2.2. Pass band | |
| 2.2.1. Centre frequency f_c : | 30.0 MHz \pm 2.0 kHz: |
| 2.2.2. 6-dB bandwidth: | \geq 70 kHz |
| 2.2.3. Ripple in the range $f_0 \pm 20.0$ kHz: | \leq 1.0 dB peak to peak |
| 2.2.4. Insertion loss: | \leq 6.0 dB |
| (measured on smallest attenuation in pass band) | |
| 2.3. Stop band | |
| 2.3.1. 50-dB bandwidth: | \geq 144 kHz |
| 2.3.2. $f_0 +90$ kHz.....+350 kHz | \geq 60 dB |
| 2.3.3. $f_0 +350$ kHz.....+10 MHz | \geq 70 dB |
| 2.3.4. $f_0 -110$ kHz.....-10 MHz | \geq 70 dB |
| 2.3.5. Spurious responses at $f_0 +100$+800 kHz | \geq 35 dB |
| 2.4. Terminating impedance R//C (input and output): | 50 Ω // 0 pF |
| 3. Marking on the case: | manufacturer, date code MQF 30.0-7000/03 |
| 4. Environment conditions: | Corresponding to Telefilter's CF001 |

Edited by: _____ date: _____ name: _____