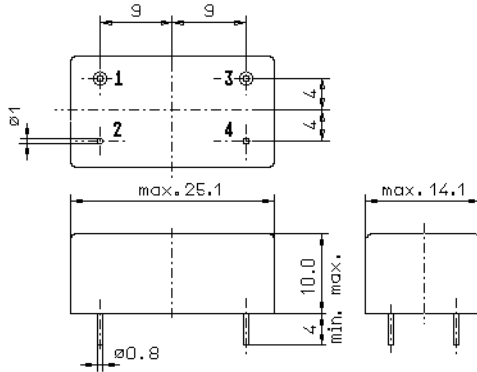


Specification for monolithic crystal filter:

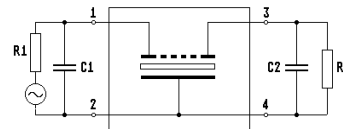
MQF 21.65 - 5000/03

1. General

1.1. Case:



GM3



- | | |
|-----------------------------------|-------------------|
| 1.2. Type name: | MQF 21.65-5000/03 |
| 1.3. Number of poles: | 6 |
| 1.4. Operating temperature range: | -40°C to +85°C |
| 1.5. Storage temperature range: | -45°C to +85°C |

2. Electric values

- | | |
|---|--|
| 2.1. Nominal centre frequency fo: | 21.65 MHz |
| 2.2. Pass band | |
| 2.2.1. Bandwidth between 6 dB - frequencies: | > fo ± 25 kHz |
| 2.2.2. Ripple: | < 2.0 dB at fo ± 20.0 kHz |
| 2.2.3. Insertion loss:
(measured on smallest attenuation in pass band) | < 3.0 dB |
| 2.3. Stop band | |
| 2.3.1. fo ± 70 kHz | > 60 dB |
| 2.3.2. alternate attenuation | > 60 dB (except spurious) |
| 2.4. Terminating impedance R//C (input and output): | 50 Ω // 0 pF |
| 3. Marking on the case: | manufacturer, date code
MQF 21.65-5000/03 |
| 4. Environment conditions: | Corresponding to Telefilter CF001 |

Edited by: _____ date: _____ name: _____