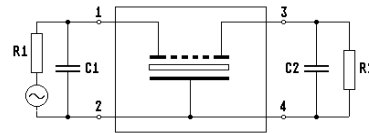
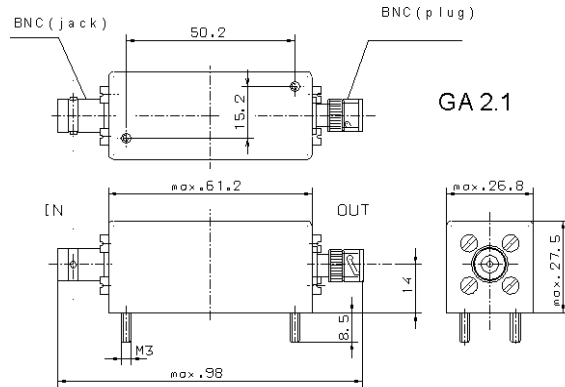


Specification for monolithic crystal filter

MQF 100....134 -1500/M

1. General

1.1. Case:



1.2. Type name:

MQF 100...131-1500/M

1.3. Number of poles:

4, 3rd overtone

1.4. Operating temperature range:

-20°C to +70°C

1.5. Storage temperature range:

-35°C to +85°C

2. Electric values

2.1. Nominal center frequency fo:

100.....131 MHz

2.2. Pass band

2.2.1. Bandwidth between 3 dB - frequencies:

> fo ± 7.5 kHz

2.2.2. Ripple:

< 1.0 dB at fo ± 4.0 kHz

2.2.3. Insertion loss:

< 6.0 dB

(measured on smallest attenuation in pass band)

2.3. Stop band

2.3.1. fo ± 30 kHz

> 20 dB

2.3.2. fo ± 60 kHz

> 40 dB

2.3.3. Alternate attenuation

> 50 dB (except spurious)

2.3.4. Spurious responses: f > fo + 60 kHz

< 10 dB

2.4. Terminating impedance (input and output):

50 Ω // 0 pF

2.5. Maximum input level

working/non-damaged

-10 dBm

3. Marking on the case:

manufacturer, date code
MQF 1XX.XXX-1500/M

4. Environment conditions:

Corresponding to Telefilter CF001

Edited by:

date: _____ name: _____