

# Monolithic crystal filter

## MQF10.7-1500/16



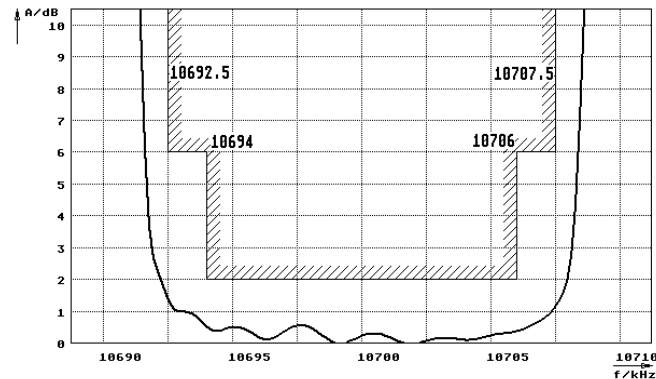
### Application

- 10 pol filter
- i.f.- filter
- use in mobile and stationary transceivers

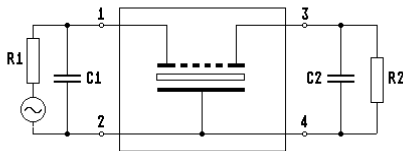
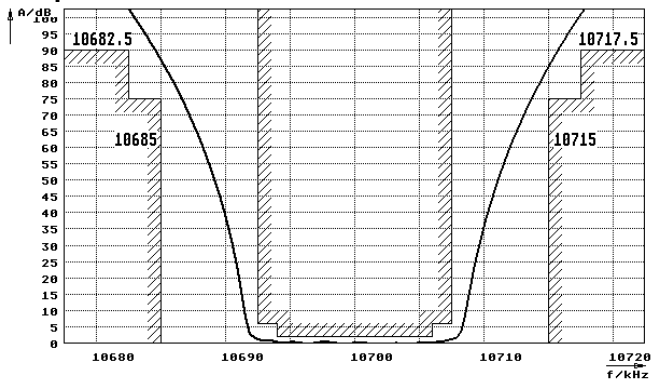
Limiting values		Unit	Value
Nominal frequency	$f_0$	MHz	10.7
Insertion loss		dB	< 4.0
Pass band at 6.0dB		kHz	$\pm > 7.5$
Ripple in pass band	$f_0 \pm 6 \text{ kHz}$	dB	< 2.0
Stop band attenuation	$f_0 \pm 15 \text{ kHz}$	dB	> 75
	$f_0 \pm 17.5 \text{ kHz}$	dB	> 90
Alternate attenuation	$f_0 \pm 17.5 \dots 300 \text{ kHz}$	dB	> 90
	Terminating impedance Z		
R1  C1		Ohm/pF	3000    1
R2  C2		Ohm/pF	3000    1
Operating temp. range		°C	-25... +70
Storage temp. range		°C	-55... +80
Environment conditions			according to CF001

### Characteristics MQF10.7-1500/16

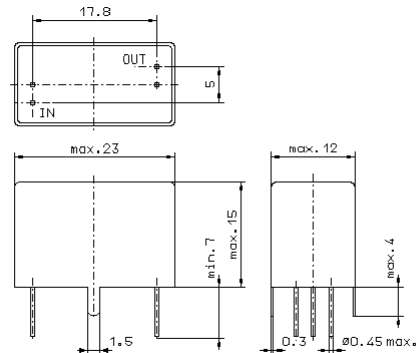
#### Pass band



#### Stop band



- Pin connections:
- 1 Input
  - 2 Ground-Input
  - 3 Output
  - 4 Ground-Output



GV6