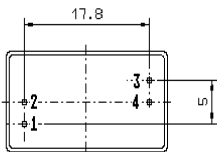


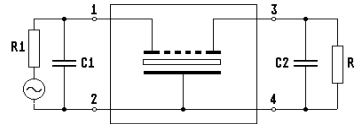
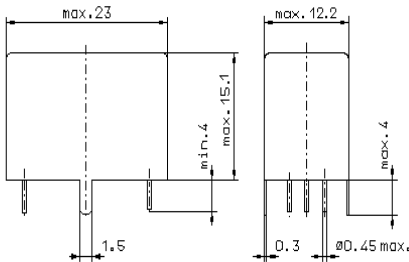
Specification for monolithic crystal filter:

**MQF 10.703-0375/04**

**1. General**



GV6.2



- 1.2. Type name: MQF 10.703-0375/04
- 1.3. Number of poles: 8
- 1.4. Operating temperature range: -20°C to +70°C
- 1.5. Storage temperature range: -35°C to +85°C

**2. Electric values**

- 2.1. Nominal centre frequency  $f_0$ : 10.703 MHz
  - 2.2. **Pass band**
    - 2.2.1. Bandwidth between 6 dB - frequencies:  $\geq f_0 \pm 1.875$  kHz
    - 2.2.2. Ripple:  $\leq 2.0$  dB at  $f_0 \pm 1.2$  kHz
    - 2.2.3. Insertion loss:  $\leq 4.0$  dB  
( measured on smallest attenuation in pass band )
  - 2.3. **Stop band**
    - 2.3.1.  $f_0 \pm 4$  kHz:  $\geq 60$  dB
    - 2.3.2.  $f_0 \pm 5$  kHz:  $\geq 80$  dB
    - 2.3.3. Alternate attenuation:  $\geq 80$  dB
  - 2.4. Terminating impedance ( input and output ):  $50 \Omega // 0$  pF
3. Marking on the case: firm, year week  
MQF 10.703-0375/04
4. Environment conditions: Corresponding to Telefilter CF001

Edited by: \_\_\_\_\_ date: \_\_\_\_\_ name: \_\_\_\_\_